

Bria 3 for Linux Quick Start Guide

Getting Started

After choosing a SIP VoIP service provider, you will need the following information:

- User name, password, and domain
- Firewall traversal and other network information; see “Configuring Accounts” in the user guide, “Bria 3 for Linux Administrator Guide”.

Run the Bria setup executable file and follow the prompts in the install wizard.

Hardware Requirements

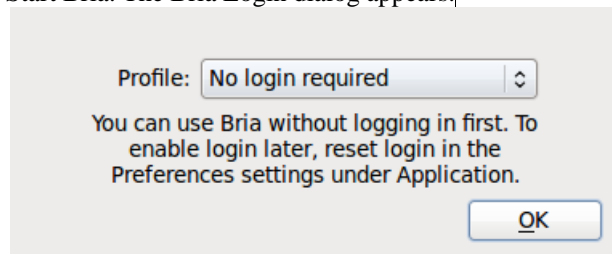
- 1 Ghz processor or faster.
- 256 MB RAM.
- 20 MB free disk space on your hard drive.
- Internet connection - broadband is best (GPRS is not supported for voice calls).
- Microphone and speakers or headset. Headsets with built-in AEC are recommended.

Software Requirements

- Qt 4.4.0
- libasound2 1.0.18
- Gconf 2.2
- PulseAudio 0.9.16 (optional)
- Ubuntu 10.04.
Installing and Configuring Bria

Starting Bria

1. Start Bria. The Bria Login dialog appears.

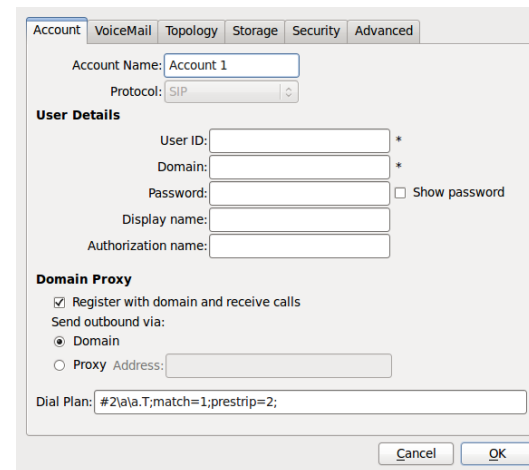


2. Set the Profile to “No login required” and click OK. The softphone appears.

Setting up Accounts

You must set up a SIP account to make phone calls.

1. Start Bria if it is not already running.
2. From the Bria menu, choose Softphone > Accounts. On the Accounts list, click Add. The SIP Account window appears.



3. Complete the User Details area with the information obtained from the VoIP service provider.
4. Complete the remaining tabs as specified by the service provider or to suit your setup. Settings that you may need to change immediately include:
 - Account tab, Domain Proxy area.
 - Topology tab, if your computer is on a network and/or behind a firewall.For more information, see the user guide.
5. Click OK; the account is created and registered. “Enter a name or number” appears in the call field on the softphone.

You can now make calls with your new phone.

The Bria 3 for Linux User Guide can be found at www.counterpath.com